

Steam Boilers

FSB10, FSB12, FSB15, FSB18



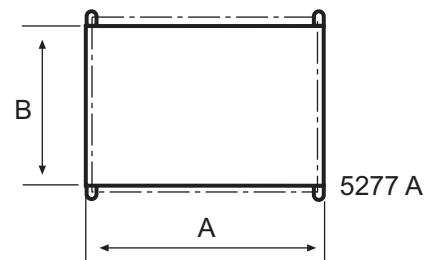
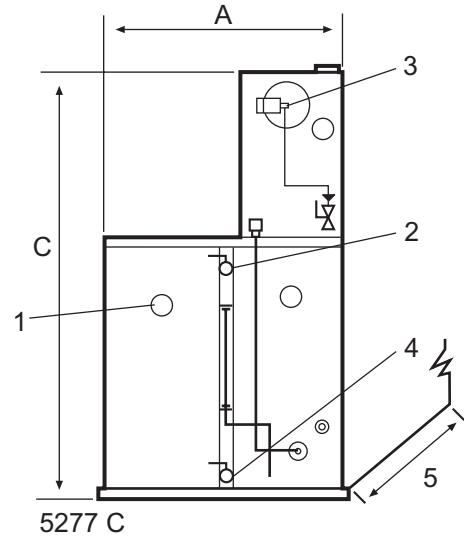
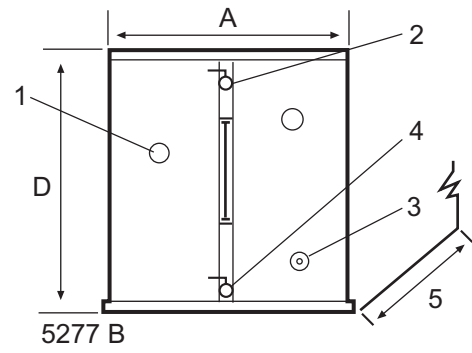
Features and benefits

- Range of capacity from 13-25 kg steam/hour
- Steam boiler with electronic water level sensor, which ensures correct water level and long lifetime of the heating elements
- Free standing boiler
- Simple installation and maintenance
- Standard with integral water feed pump

Main options

- Tank for condensate recovery efficiency
- Variable heating control for energy saving when full capacity is not required

Electrical connections			FSB10	FSB12	FSB15	FSB18
Voltage						
208-240V 3 AC 50/60 Hz						
380-415V 3/3N AC 50/60 Hz			kW	kW	kW	kW
Boiler heating options		Heater				
Steam output	Groups	Rating				
13 kg/h	(5+5 optional)	10 kW	11	-	-	-
16 kg/h	(6+6 optional)	12 kW	-	13	-	-
20 kg/h	(7.5+7.5 opt.)	15 kW	-	-	16	-
25 kg/h	(9+9 optional)	18 kW	-	-	-	19
Steam outlet, drain, water connections						
Steam		DN	15	15	15	15
Max. steam pressure		kPa	580	580	580	580
Water supply	int. dia. mm		13	13	13	13
Boiler drain		DN	15	15	15	15
Boiler details						
Vessel capacity		Litres	20	20	20	20
Shipping data						
	Net without tank, kg		84	84	84	84
	Net with tank, kg		113	113	113	113
Dimensions in mm						
A	Width		650	650	650	650
B	Depth		410	410	410	410
C	Height		1260	1260	1260	1260
D			700	700	700	700
1 Electrical connection						
2 Steam out-let						
3 Water supply						
4 Boiler drain						
5 Depth, front to back dimension 410 mm						



Thinking of you
Electrolux