

# Bases and stacking kit for washer extractors and tumble dryers



## Features and benefits

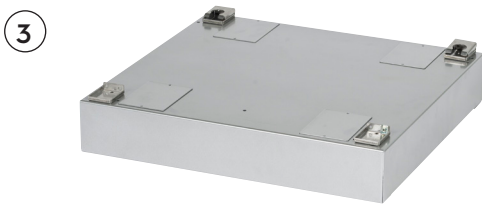
- A base brings the machine to a convenient working height – for improved ergonomics in your laundry
- Front and side panels of the machine are better protected from wear and tear when mounted on a base
- Base IWS™ (Integrated Weighing System) for machines with Clarus Control. Load cells located in the feet weigh the contents of the drum as it being loaded. The current weight is displayed on the Clarus Control panel

**BASE; open front & sides**

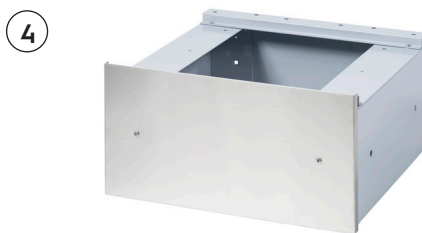

Suitable for models: W465H, W565H, W475H, W575H, T5190,  
WH6-6, TD6-6  
Material: Stainless steel.



Suitable for models: W465H, W565H, W475H, W575H,  
W4105H, W5105H, W4130H, W5130H,  
W4180H, W5180H, W4240H, W5240H,  
W4300H, W5300H, T5190  
IWS: W4130H-W4300H, W5130H-W5300H  
Material: Stainless steel.


**BASE; closed front & sides**


Suitable for models: WH6-6, TD6-6  
Height: 100 mm  
Material: Stainless steel  
Material: Galvanised, silver grey painted



Suitable for models: WH6-6, TD6-6  
Height: 290 mm  
Material: Stainless steel front and galvanised,  
silver grey painted sides  
Material: Galvanised, silver grey painted front  
and sides  
Material: Stainless steel front and galvanised,  
silver grey painted sides  
Special version "floating foundation" -  
concrete filled

**BASE; closed front & sides**
**5**

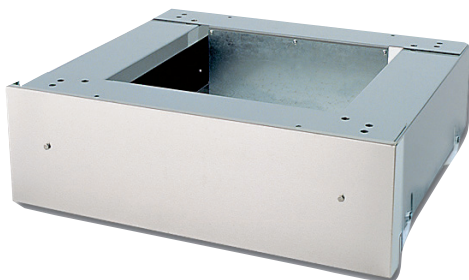

Suitable for models: W465H, W565H, W475H, W575H, W4105H, W5105H, W4130H, W5130H, W4180H, W5180H, W4240H, W5240H, W4300H, W5300H, T5190, WD5130, WD5240

Material: Galvanised, grey painted steel with stainless steel front panel.

**6**


Suitable for models: W575N\*, W585N\*, W5105N\*, W5130N, W5180N, W5250N

Material: Galvanised steel / \*Galvanised, grey painted steel with stainless steel front panel.

**BASE; mobile**
**7**


Suitable for models: W465H, W565H, W475H, W575H, W4105H, W5105H, T5190

Material: Galvanised, grey painted steel with stainless steel front panel.

Feature: The base frame has four wheels. Makes the maintenance work easier in narrow areas.

**BASE; "floating foundation"**
**8**


Suitable for models: W465H, W565H, W475H, W575H, W4105H, W5105H, W4130H, W5130H, W4180H, W5180H, W4240H, W5240H

Material: Galvanised, grey painted steel with stainless steel front panel.

Feature: A "floating foundation" filled with concrete eliminates noise to other parts of the building.

**BASE; closed front and sides with wheels**
**9**


Suitable for models: TD6-7  
 988918475 Height: 100 mm  
 Material: Stainless steel  
 988918476 Height: 100 mm  
 Material: Galvanised, silver grey painted

**BASE; open front and sides with wheels**
**10**


Suitable for models: TD6-7  
 Height: 370 mm  
 Material: Stainless steel  
 Material: Galvanised, silver grey painted

**STACKING KIT with or without base**


Suitable for models: WH6-6 with TD6-7  
 988918479 Stainless steel stacking kit without the base  
 988918480 Galvanised, silver grey painted stacking kit without the base  
 988918481 + 988918473 Stainless steel stacking kit with the base included  
 988918482 + 988918474 Galvanised, silver grey painted stacking with the base included  
 988918481 Stainless steel stacking kit, when re-using existing base  
 988918482 Galvanised, silver grey painted stacking, when re-using existing base

**STACKING KIT**


Suitable for models: WH6-6 with TD6-6  
 988802039 Depth: 210 mm  
 Material: Galvanised, silver grey painted

High spin washer extractors*											
Pos.	Height in mm	Material	WH6-6	W465H/W475H W565H/W575H	W4105H W5105H	W4130H W5130H	W4180H W5180H	W4240H W5240H	W4300H W5300H		
1	200	SS	988918610								
1	290	SS	988918611		988918506						
1	555	SS	988918612								
1	240	SS		988918505							
2	490	SS		988918506	988918606						
2	485	SS				988918706					
2	490	SS				988918709 (IWS)					
2	460	SS					988918806				
2	460	SS					988918809 (IWS)				
2	430	SS						988918806	988919006		
2	430	SS						988918909 (IWS)	988919009(IWS)		
3	100	SS	988918473								
3	100	G, SG P	988918474								
4	290	SS F + G SG P S	988918483								
4	290	G, SG P F S	988918484								
4	290	SS F + G SG P S (FF)	988918485								
4	290	G, SG P F S (FF)	988918486								
5	190	G, G P S W SS FP		988918511	988918621						
5	210	G, G P S W SS FP				988918711					
5	230	G, G P S W SS FP					988918811	9889189-51	988919011		
6	190	G, G P S W SS FP		988918515							
7	190	G, G P S W SS FP		988918513	988918623						
8	190	G, G P S W SS FP		988918512	988918622						
8	210	G, G P S W SS FP				988918712					
8	230	G, G P S W SS FP					988918812				
			Normal spin washer extractors								
			W575N**	W585N**	W5105N**	W5130N	W5180N	W5250N			
6	190	G, G P S W SS FP	988917940	988917941							
6	210	G, G P S W SS FP			988917942	988917923					
6	230	G, G P S W SS FP					988917924	988917925			
			Tumble dryers								
			TD6-6	TD6-7	T5190						
10	370	SS		988918477							
10	370	G, SG		988918478							
1	200	SS	988918610								
1	290	SS	988918611		988918505						
1	555	SS	988918612								
2	490	SS			988918506						
3	100	SS	988918473								
3	100	G, SG P	988918474								
4	290	SS F + G SG P S	988918487								
4	290	G, SG P F S	988918488								
5	190	G, G P S W SS FP			988918561						
9	100	SS		988918475							
9	100	G, SG		988918476							
7	190	G, G P S W SS FP			988918563						
			Washer & Dryer								
			WD5130	WD5240							
6	290	G, G P S W SS FP	988919101								
6	300	G, G P S W SS FP		988919201							

\* Note that base with IWS is only available on W4130H, W5130H, W4180H, W5180H, W4240H, W5240H, W4300H, W5300H.

\*\* Galvanised steel / \*\*Galvanised, grey painted steel with stainless steel front panel.

SS = Stainless steel

G, SG = Galvanised, silver grey painted

G, SG P S = Galvanised, silver grey painted sides

SS F + G SG P S = Stainless steel front and galvanised, silver grey painted sides

G, G P S W SS FP = Galvanised, grey painted steel with stainless steel front panel

SG = Silver grey

FF = Special version "Floating foundation" - concrete filled

